

Station 7: Obelia hydroid

1. Is this a plankton?
2. What indicates this to you?

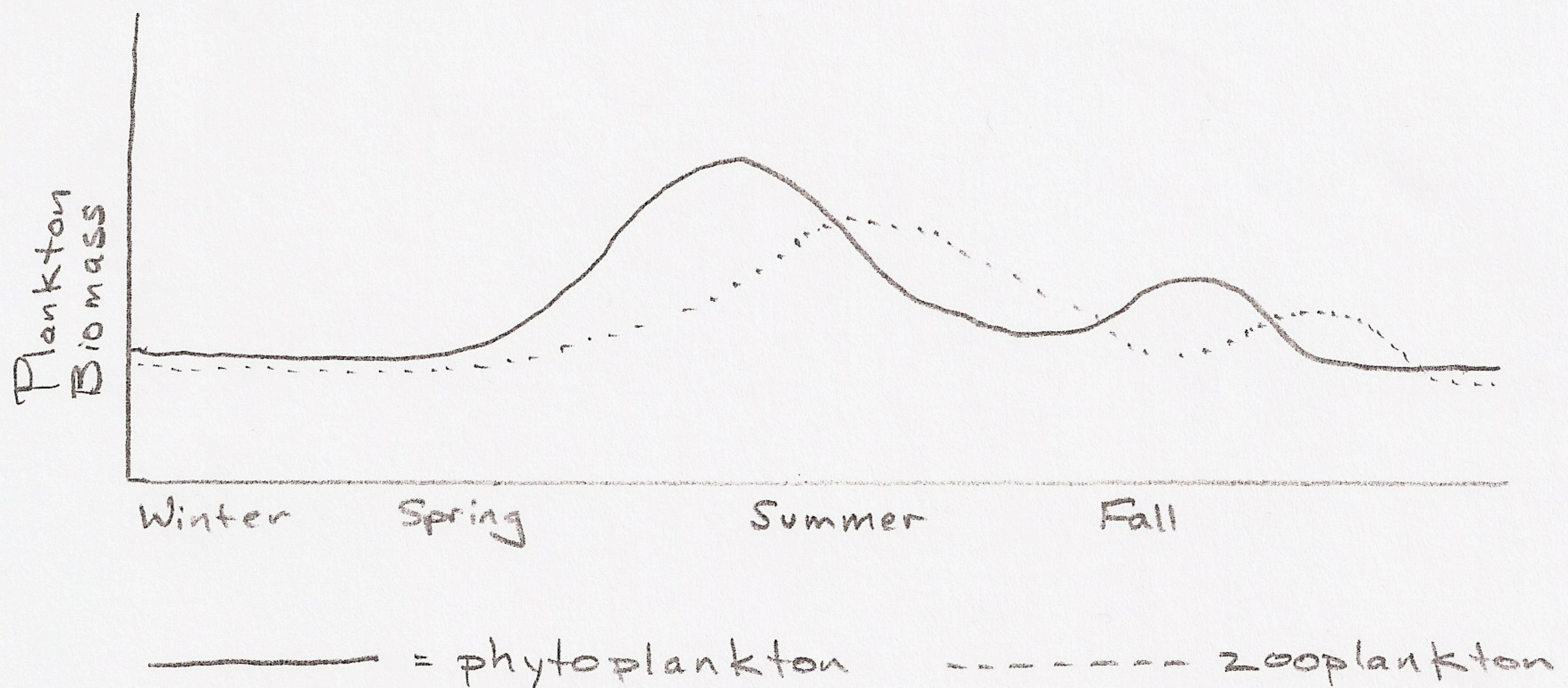
Station 8: Nekton larvae, an example meroplankton

The meroplankton pictured is a pipefish.

3. Sketch the pipefish and label any parts that are apparent.

Station 9: Plankton populations over a year (at your desk or at home)

Use the graph below to answer the following questions. Proper answers require thought.



1. When do phytoplankton reproduce quickly (bloom)? Why do you think?
2. Why do you think the zooplankton start to increase in number just after the phytoplankton?